

# PROGRAM

**Tuesday, 24<sup>th</sup> October**

**8:30 h Registration**

**8:45 h Welcome**

Jaime Millán (CBMSO) / Pedro M. Fernández (UEX)

**9:00-9:50 Invited Conference**

Chairs: Jaime Millán (CBMSO) and Pedro M. Fernández (UEX)

**"Cell mechanoadaptation: caveolae mechanobiology and tissue biomechanics"**

Miguel A. del Pozo (CNIC)

Charla patrocinada por Izasa Scientific



## **SESSION I**

Chair: Isabel Fabregat (IDIBELL)

9:50-10:15

**"Myosin II activation as a hallmark and a vulnerability in melanoma cross-resistance"**

*Jose L Orgaz, Maria Romina Girotti, Eva Crosas-Molist, Anna Perdrix, Silvia Mele, Irene Rodriguez-Hernandez, Mirella Georgouli, Victoria Bridgeman, Panagiotis Karagiannis, Pahini Pandya, Gaia Cantelli, Lena Boehme, Matthew Smith, Gabriela Gremel, Rebecca Lee, Elena Galvani, Franziska Baenke, Frank O Nestle, Paul Lorigan, Fredrik Wallberg, Amaya Viros, Ilaria Malanchi, Sophia N Karagiannis, Richard Marais, Victoria Sanz-Moreno (King's College)*

10:15-10:40

**"A right-handed signalling pathway drives heart looping in vertebrates"**

*Oscar Ocaña, Hakan Cockun, Carolina Minguillón, Prayag Murawala, Elly Tanaka, Juan Galceran, Ramón Muñoz-Chápuli, Angela Nieto (INA, CSIC-UMH).*

10:40-11:10 Coffee break

## **SESSION II**

Chair: Joaquín Teixidó (CIB)

11:10-11:35

**“Nuclear changes induced by cell receptors in migrating leukemic cells”**

*Elena Madrazo, Andrea Cordero Conde, Javier Redondo-Muñoz (UCM)*

11:35-12:00

**“Novel roles of MMP-9 contributing to chronic lymphocytic leukemia pathology”**

*Noemí Aguilera-Montilla, Alejandra Gutiérrez-González, Elvira Bailón, Estefanía Ugarte-Berzal, Rebeca Uceda Castro, Lara García Campillo, and Angeles García Pardo (CIB)*

12:00-12:25

**“Membrane metalloproteinases regulation by insertion into microdomains and extracellular vesicles”**

*Henar Suarez, Soraya López-Martín and María Yáñez-Mó (CBMSO)*

12:25-13:50 Lunch

## **SESSION III**

Chair: Victoria Sanz-Moreno (King's College)

13:50-14:15

**“Bruton's tyrosine kinase determines antigen-triggered B cell activation by regulating antigen aggregation and immune synapse assembly”**

*Sara Roman-García, Sofia R. Gardeta, Sara V. Merino-Cortes, Luis M. Allende, Luis I. Gonzalez-Granado and Yolanda R. Carrasco (CNB)*

14:15-14:40

**“ICAP-1 inhibits  $\alpha 4 \beta 1$  integrin-dependent cell adhesion”**

*Silvia Sevilla-Movilla, Nohemí Arellano-Sánchez, Soledad Isern de Val, Sofía R. Gardeta, Yolanda Carrasco and Joaquin Teixidó (CIB)*

14:40-15:05

**“The actin-microtubule cross-linker short-stop interacts with the planar cell polarity signaling pathway”**

*Sergio Garrido-Jimenez, Sonia M. Mulero-Navarro and José M. Carvajal-Gonzalez (UEX)*

15:05-15:30

**“A role for podoplanin-CD44 interaction in carcinoma cell invasion”**

*Lucía Montero-Montero, Ramírez A, Mariam Shamhood, Jaime Renart, Miguel Quintanilla and Ester Martín-Villar (IIB)*

15:30-15:55 Coffee break

**SESSION IV**

Chair: Javier Redondo (UCM)

15:55-16:20

**“Crosstalk between TGF- $\beta$ -induced Epithelial-Mesenchymal transition and stemness in hepatocellular carcinoma”**

*Andrea Malfettone, Jitka Soukupova, Esther Bertran, Eva Crosas-Molist, Raquel Lastra, Joan Fernando, Petra Koudelkova, Bhavna Rani, Ángels Fabra, Teresa Serrano, Emilio Ramos, Wolfgang Mikulits, Gianluigi Giannelli, Isabel Fabregat (IDIBELL)*

16:20-16:45

**“Regulatory role of Met-driven pathway on TGF-  $\beta$  -induced EMT in oval cells”**

*Laura Almalé, María García-Álvaro, Adoración Martínez-Palacián, Nerea Lazcanoiturburu, Annalisa Addante, César Roncero, Margarita Fernández, Eduardo Rial, Isabel Fabregat, Blanca Herrera and Aránzazu Sánchez (UCM)*

16:45-17:10

**“Small Rho GTPases in neuroblastoma progression”**

*Francisco M. Vega (IBIS)*

17:10-17:35

**“IL13R $\alpha$ 2 requires PTPN1 and FAM120A to promote cancer metastasis and progression”**

*Rubén A. Bartolomé, Sofía Torres, Irina V. Balyasnikova and J. Ignacio Casal (CIB)*

17:35-18:00

**“RhoA and Rac1 preserve corneal endothelial barrier function”**

*Diana Santander-García, Silvia Benito-Martínez, Cristina Ortega, Natalia Colás-Algora, Beatriz Marcos-Ramiro, Verónica Martínez-Sánchez, Susana Barroso Fernández, Ignacio Jiménez Alfaro and Jaime Millán (CBMSO, CSIC-UAM)*

**SEBC CORPORATE MEMBERS**

**tebu-bio**



**eppendorf**

**Gijón**  
Convention Bureau

SOCIEDAD  
ESPAÑOLA DE  
BIOLOGÍA  
CELULAR  
SPANISH  
SOCIETY FOR  
CELL BIOLOGY  
**sebc**

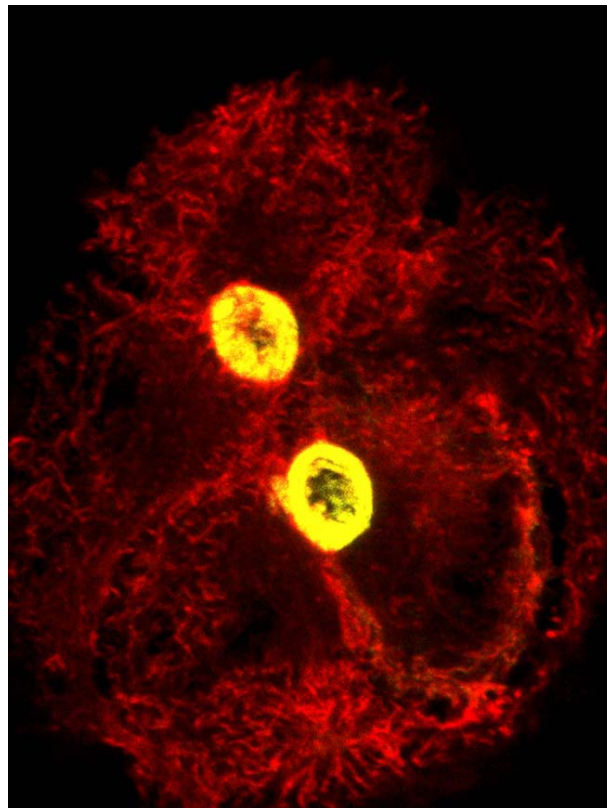


Universidad de Oviedo  
Universidá d'Uviéu  
University of Oviedo

V WORKSHOP  
MECHANISMS OF CELL ADHESION,  
MIGRATION AND INVASION

**ST III - Joint Congress 2017 - SEBC/SEBD/SEG**

**October 24<sup>th</sup> - Gijón, Spain**



Organized by:

Jaime Millán (Centro de Biología Molecular Severo Ochoa (CBMSO), Madrid)



Pedro M. Fernández (Universidad de Extremadura, Badajoz)

